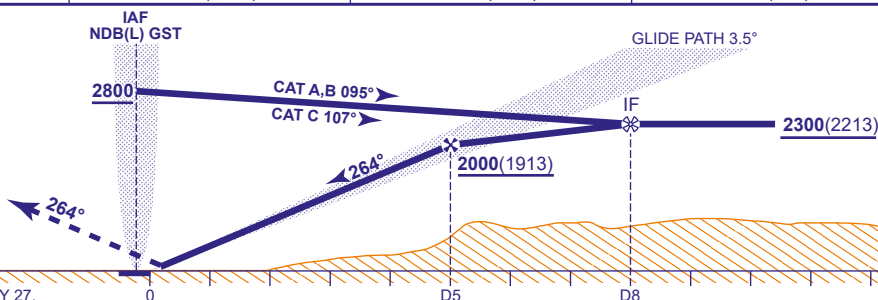


101	ILS/DME/NDB(L) RWY 27 (ACFT CAT A,B,C)
87	



Climb on track 264°M to **1000**
or D2.0 I-GOS outbound
whichever is later, turn right
to NDB(L) GST to hold at **2800**.



DME I-GOS zero ranged to THR RWY 27.

Aircraft Category		A	B	C	Rate of descent	G/S KT	160	140	120	100	80
OCA (OCH)	CAT I	272(185)	281(194)	290(203)		FT/MIN	990	870	750	620	500
VM(C)OCA (OCH AAL)	Total Area	1000(899)	1000(899)	1500(1399)							
	North of RWYs 04/22 and 09/27	830(729)	830(729)								

NOTES 1 NDB(L) GST occasionally subject to erroneous indications within 5NM of Droitwich on approach to RWY 27.
2 Aircraft will normally be required to hold not lower than **4000** or the equivalent FL.

CHANGE (7/21): DEFFORD HIRTA REMOVED. MAG VAR. MAG TRACKS. AD 2.10 OBSTACLES REVISED. ULLENWOOD HELI REMOVED. SANDYWELL PK HELI ADDED.